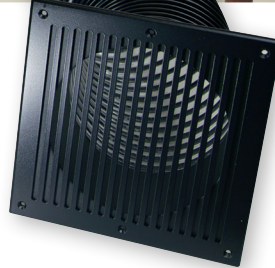


PP15-M POWERPIPE SERIES



15" HIDDEN BANDPASS SUBWOOFER WITH 36" FLEXPORTR AND ARCHITECTURAL PORT MOUNTING SYSTEM



Size* 17.125(h x 16.5 w x 24d (in)
435 h x 419 w x 610 d (mm)
(includes feet & connector)

Freq Response 18-150Hz±3dB

Impedance 4 ohms

Sensitivity 95dB 2.83V /1m

Power req. 250-1000 watts

Woofer (1) 15" (381mm) Aluminum

Enclosure Aluminum

* See technical drawing for exact details.

(1) 15" (381mm) Aluminum Woofer

Inconspicuous by design, James PowerPipe Subwoofers offer seamless fusion of visionary technology and revolutionary performance. James bandpass design produces a thunderous performance while delivering smooth frequency response and tight transitions. The basic design behind the Power Pipe is to move large amounts of air through a relatively small hose, which resonates at a tuned frequency of about 35Hz. This is achieved through the design of the drivers and surrounding sealed cabinet composition. Because the woofer has been tuned with its acoustical peak in the region of frequencies where bass energy in music and movie soundtracks tend to be greatest, the driver can operate at the frequencies within its linear cone excursion range, and rely on the band pass flextube to simply "amplify" its output.

Features all aluminum drivers mounted inside a sealed enclosure. The front of each unit features a sealed band pass port, where the flextube attaches and from there connects to any number of available port options.

The PP15-M can be powered by the optional James M1000 DSP amplifier, providing up to 1000W of power and full DSP control.



Optional M1000

James
LOUDSPEAKER

2185 Park Place, Minden, NV 89423

Ph: 775.461.7500

www.jamesloudspeaker.com

PROGRESSIVE AND IMPRESSIVE