

ceratec



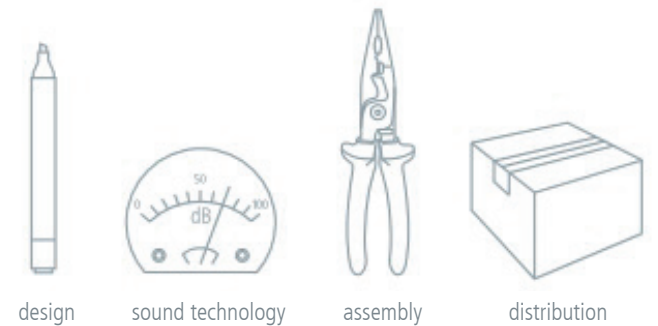


ceratec einfach guter klang

as a family business we do not think in quarterly profits, but family-friendly for the benefit of the company. we pursue a long-term strategy and deliberately accept investments, that do not pay off in short-term, but turn-out as a success only in a scope of several years. the best proof for this is **cerasonar**. this business division will only leave a reasonable profit after almost 7 years, which in times of good earnings are reinvested in development, production and expansion of the distribution structure. this secures a sustainable future for the company and a large degree of independence.

how can long-term thinking in family businesses be implemented in everyday practice? Ulrich Ranke, the founder of the company, tells how:

„losing money is preferable to losing confidence. keeping promises and the belief in the intrinsic value of our products rank higher than short-term profits.“

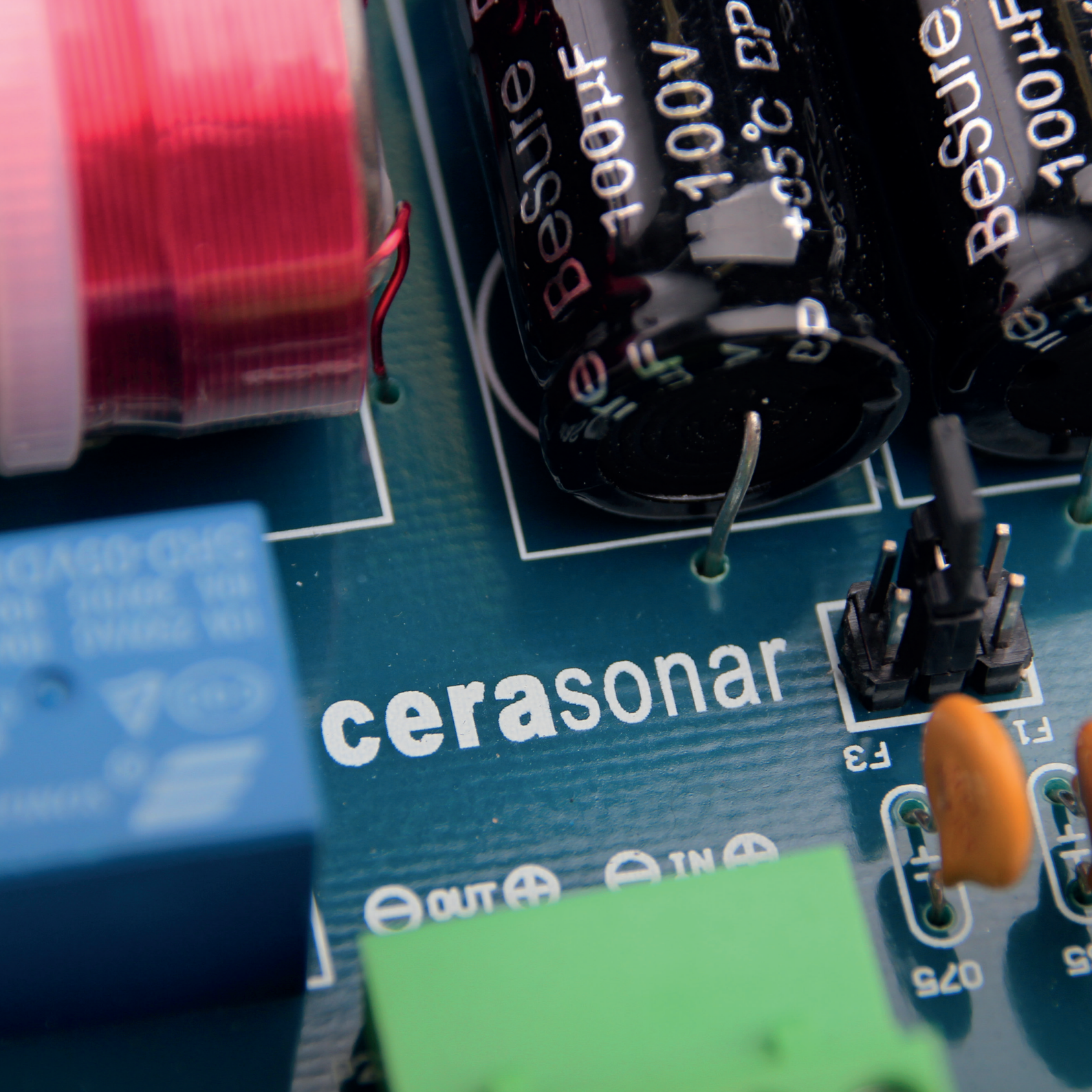


design

sound technology

assembly

distribution

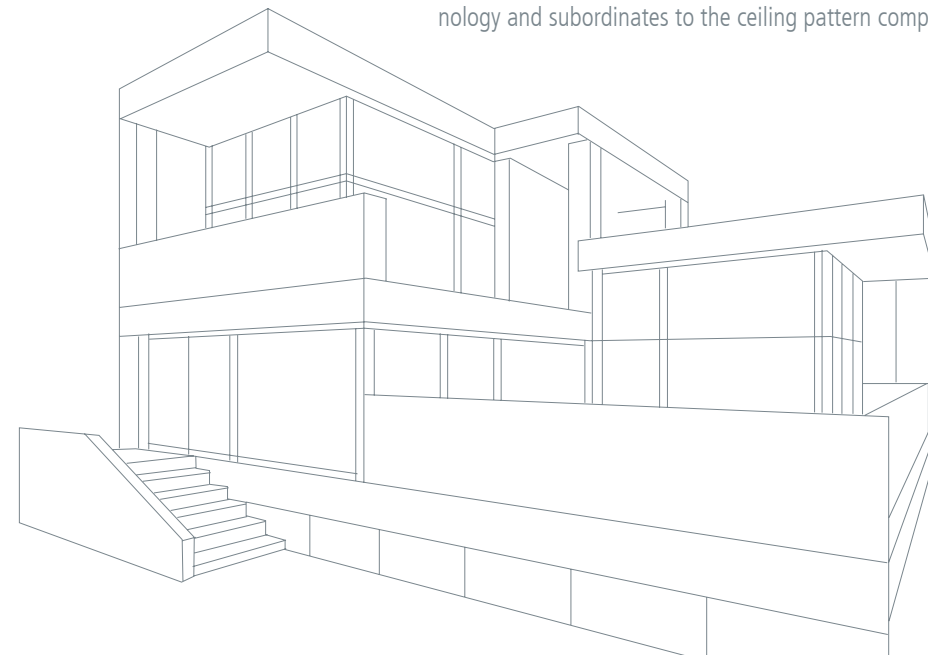


cerasonar the evolution of sound

the architecture keeps design and function, enriched by music simply present in the room, emerging from nowhere.

as a result, no speaker is visible anymore. ideally, the speaker is installed in a suspended ceiling or a dry wall. the installation is similar to a plaster board. at the end the purity of the architecture is retained and enjoying music creates a good mood.

with our invisible speakers we would like to re-define the standard for the smart home of today and tomorrow. just as the outlets for luminaires, the speaker becomes part of the home technology and subordinates to the ceiling pattern completely as it does not manifest itself visually.



cerasonar retrofit

einfach guter klang

cerasonar retrofit is particularly suitable for retrofitting purposes and is also very easy to install. these small sound panels allow for a good quality sound even without a special dsp amplifier. the special construction is ideal for retrofitting as a multiroom speaker, as for easy installation as well.

especially drywalls are suitable for cerasonar retrofit, in addition also a quick and simple installation in ceilings are possible. with help of a template, the four mounting holes are drilled into the required position and subsequently the cutout for the loudspeaker is sawed out.

is inserted and fixed with four dry-wall screws. additionally, the stability of the panel is improved by the use of reinforcement fabric tape and high-quality plaster (e.g. knauf uniflott or ardex), so that the speaker remains installed without cracking problems.

cerasonar retrofit is available in two models of different load capacities and volume levels.

after connecting the speaker cables, the cerasonar panel



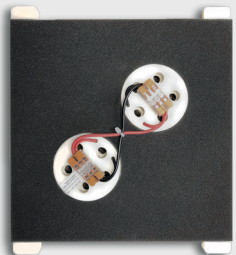
cerasonar 1520fit

capacity:	25 w * (50 w **)
impedance:	8 ohm
drift:	1 exciter
frequency range:	100 - 18,000 hz *
radiation range:	180° x 180°
max. SPL:	94 db 1 w/1 m
measurements:	15 x 22.5 x 4.5 cm
construction:	1-layer planked 12.5 mm gibbon board
uk-profile interval:	min. 20 cm
weight:	0.7 kg

application

*power rating as per application of a high-pass filter. no electronic low-frequency boost must be used. resulting damage from mechanical overload are excluded from the warranty.

stereo:	*****
surround:	*****
multiroom:	*****



cerasonar 2525fit

capacity:	50 w * (100 w **) ***
impedance:	4 ohm
drift:	2 exciter
frequency range:	100 - 18,000 hz *
radiation range:	180° x 180°
max. SPL:	97 db 1 w/1 m
measurements:	25 x 27.5 x 4.5 cm
construction:	1-layer planked 12.5 mm gibbon board
uk-profile interval:	min. 30 cm
weight:	1.2 kg

** max. pulse power rating. operation via electronic high-pass filters of an AV receiver (min. 150 Hz / 12 dB) or the CERA PROTECT FILTER
***single-stereo – this invisible speaker model can also be configured in a single-stereo mode (both stereo channels from a single panel).

stereo:	*****
surround:	*****
multiroom:	*****

installationvideos



<https://youtu.be/FCx/ThkNmXM>



<https://youtu.be/E6DtBqqx-ag>

cerasonar concept

einfach guter klang

the **cerasonar** concept series for wet rooms is an optimal solution for music playback or background sonication in wet rooms such as wellness spas or bathrooms. the mounting of the sound panels is realized during dry-wall installation and the panels are placed in the required position instead of the plasterboard itself. as with **cerasonar** retrofit, a special dsp amplifier is not required.

cerasonar concept is available in four models for different mounting situations. an invisible installation is possible in both ceilings and walls.



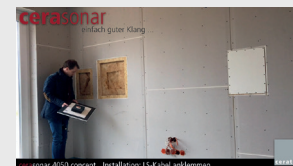
cerasonar 4050con

capacity:	25 w * (50 w **)
impedance:	8 ohm
drift:	1 exciter
frequency range:	100 - 18,000 hz *
radiation range:	180° x 180°
max. SPL:	96 db 1 w/1 m
measurements:	40 x 50 x 5.6 cm
construction:	1-2 layer planked 12.5 mm gibbon board
uk-profile interval:	40 cm / 50 cm
weight:	1.2 kg

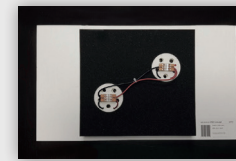
*power rating as per application of a high-pass filter. no electronic low-frequency boost must be used. resulting damage from mechanical overload are excluded from the warranty.

stereo:	*****
surround:	*****
multiroom:	*****

installationvideos



<https://youtu.be/N1j1nJx1LXU>



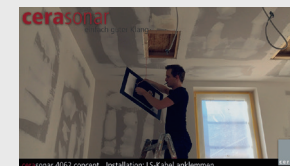
cerasonar 4062con

capacity:	50 w* (100 w **) ***
impedance:	4 ohm / 2 x 8 ohm
drift:	2 exciter
frequency range:	70 - 18,000 hz *
radiation range:	180° x 180°
max. SPL:	99 db 1 w/1 m
measurements:	40 x 62 x 5.6 cm
construction:	1-2 layer planked 12.5 mm gibbon board
uk-profile interval:	40 cm / 62.5 cm
weight:	1.8 kg

** max. pulse power rating. operation via electronic high-pass filters of an AV receiver (min. 150 Hz / 12 dB) or the cerasonar protection unit.

***single-stereo – this invisible speaker model can also be configured in a single-stereo mode (both stereo channels from a single panel).

stereo:	*****
surround:	*****
multiroom:	*****



<https://youtu.be/CB2ChPEh9WE>

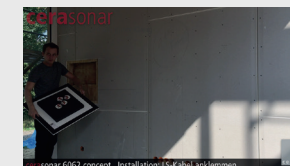


cerasonar 6062con

capacity:	100 w * (200 w **) ***
impedance:	8 ohm / 2 x 4 ohm
drift:	4 exciter
frequency range:	60 - 18,000 hz *
radiation range:	180° x 180°
max. SPL:	102 db 1 w/1 m
measurements:	60 x 62.5 x 5.6 cm
construction:	1-2 layer planked 12.5 mm gibbon board
uk-profile interval:	60 cm / 62,5 cm
weight:	2.7 kg

these models from our range of invisible speakers generate more bass energy than our pure exciter panels. therefore, the speaker must be spackled with a flexible fine filler. we were able to document good results with the knauf uniflott and ardex 828 products. **do not install too early** – a good example to follow is the parquet layer, which starts his work only after a building moisture check with appropriate results has been carried out.

stereo:	*****
surround:	*****
multiroom:	*****



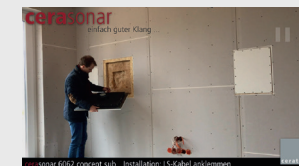
<https://youtu.be/d6QjNGBZLgM>



cerasonar 6062sub

capacity:	100/ 200 w
impedance:	8 ohm
drift:	1 subwoofer
frequency range:	35 - 150 hz
radiation range:	180° x 180°
max. SPL:	107 db 1 w/1 m
measurements:	60 x 62 x 11.0 cm
construction:	1-layer planked 12.5 mm gibbon board
uk-profile interval:	60 cm / 62,5 cm
weight:	7.0 kg

stereo:	*****
surround:	*****
multiroom:	*****



<https://youtu.be/qydAmWyx2JA>

cerasonar reference einfach guter klang

all models of the **cerasonar** reference series feature the new **cerasonar** XT6000 high-performance exciter, which is capable of a considerably higher sound pressure level. with the **cerasonar** MCC system (mode correction control), a more even frequency response is achieved, which has a noticeable effect on the tonal balance as well. the reference series is particularly suitable for pure stereo and surround installations. the reference models offer high-class sound at party volume levels.



cerasonar 4050ref

capacity:	25 w * (50 w **)
impedance:	8 ohm
drift:	1 exciter
frequency range:	100 - 18,000 hz *
radiation range:	180° x 180°
max. SPL:	102 db 1 w/1 m
measurements:	40 x 50 x 5.6 cm
construction:	1-2 layer planked 12.5 mm gibbon board
uk-profile interval:	40 cm / 50 cm
weight:	1.4 kg

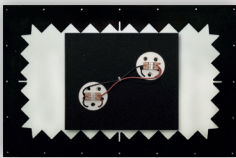
*power rating as per application of a high-pass filter. no electro-
nic low-frequency boost must be used. resulting damage from
mechanical overload are excluded from the warranty.

stereo:	*****
surround:	*****
multiroom:	*****

installationvideos



<https://youtu.be/N1j1nJx1LXU>

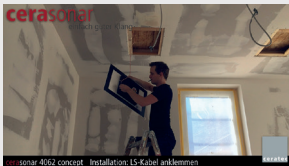


cerasonar 4062ref

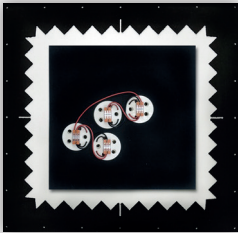
capacity:	50 w * (100 w **) ***
impedance:	4 ohm / 2 x 8 ohm
drift:	2 exciter
frequency range:	70 - 18,000 hz *
radiation range:	180° x 180°
max. SPL:	105 db 1 w/1 m
measurements:	40 x 62 x 5.6 cm
construction:	1-2 layer planked 12.5 mm gibbon board
uk-profile interval:	40 cm / 62.5 cm
weight:	2.1 kg

** max. pulse power rating. operation via electronic high-pass
filters of an AV receiver (min. 150 Hz / 12 dB) or the cerasonar
protection unit.
***single-stereo – this invisible speaker model can also be
configured in a single-stereo mode (both stereo channels from
a single panel).

stereo:	*****
surround:	*****
multiroom:	*****



<https://youtu.be/CB2ChPEh9WE>



cerasonar 6062ref

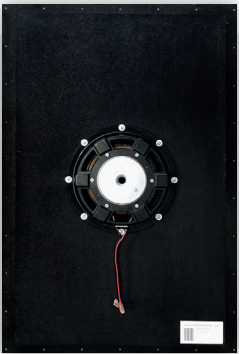
capacity:	100 w * (200 w **) ***
impedance:	8 ohm / 2 x 4 ohm
drift:	4 exciter
frequency range:	60 - 18,000 hz *
radiation range:	180° x 180°
max. SPL:	111 db 1 w/1 m
measurements:	60 x 62 x 5.6 cm
construction:	1-2 layer planked 12.5 mm gibbon board
uk-profile interval:	60 cm / 62.5 cm
weight:	3.0 kg

these models from our range of invisible speakers generate more bass energy
than our pure exciter panels. therefore, the speaker must be spackled with a
flexible fine filler. we were able to document good results with the knauf unif-
lott and ardex 828 products. **do not install too early** – a good example to
follow is the parquet layer, which starts his work only after a building moisture
check with appropriate results has been carried out.

stereo:	*****	*****	*****
surround:	*****	*****	*****
multiroom:	*****	*****	*****



<https://youtu.be/d6QjNGBZLgM>



cerasonar 9062sub

capacity:	250/ 500 w
impedance:	4 ohm
drift:	1 subwoofer
frequency range:	25 - 150 hz
radiation range:	180° x 180°
max. SPL:	111 db 1 w/1 m
measurements:	90 x 62 x 11.0 cm
construction:	1-2 layer planked 12.5 mm gibbon board
uk-profile interval:	60 cm / 62.5 cm
weight:	10 kg

these models from our range of invisible speakers generate more bass energy
than our pure exciter panels. therefore, the speaker must be spackled with a
flexible fine filler. we were able to document good results with the knauf unif-
lott and ardex 828 products. **do not install too early** – a good example to
follow is the parquet layer, which starts his work only after a building moisture
check with appropriate results has been carried out.



<https://youtu.be/8mvNpZrN--M>

cerasonar accessories

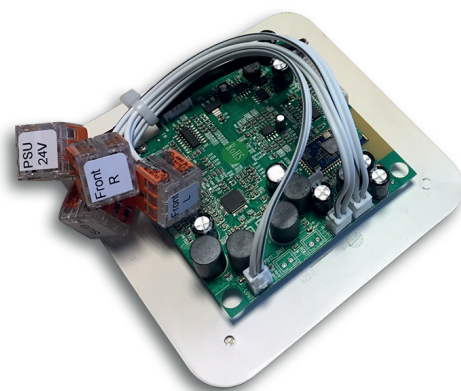
our range of accessories allows for installation in every area of application.

cerasonar 2.1 bluetooth amplifier

suitable for the **cerasonar** retrofit series in combination with a subwoofer, e.g. ideal for bathroom and kitchen. this enables wireless music transmission between device (e.g. smartphone) and speaker system. this amplifier features a built-in dsp and a bluetooth audio chip.

output power rating:

8 ohm 2 x 10 w (panel) / 1 x 25 w (subwoofer)
4 ohm 2 x 15 w (panel) / 1 x 30 w (subwoofer)



masonry mounting frame

for the concept and reference series we offer additional masonry mounting frames made of multilayer wood. these frames allow the installation of panels in solid masonry walls and in cases of retrofitting, if no facing formwork has been used.



cerasonar backbox

the backbox, which is mounted on the reverse side of the respective **cerasonar** panel, is intended to reduce the sound emissions in neighbouring rooms. the rearward sound radiation is decelerated by a sophisticated damping system and compression effects are absorbed, which ultimately leads to a significant reduction of about 26 dB.



cerasonar protection unit

this protection unit serves as an extended overload protection that also reacts to fast impulses. our 5-year warranty on the cerasonar panels is only granted, if this protection unit has been used. as a german manufacturer, we follow the german VOB warranty guidelines for drywall construction.





important:

after fixing the screws a functional test using a music signal is mandatory!



cerasonar installation in drywalls

1. before the installation is carried out in walls or ceilings, the construction should be tested for vibration noise. light beats with the heel of your hand against the plasterboard shell reveals any weaknesses of the substructure. the cavity behind the panel must get an insulation, for example, mineral wool or according to the specifications of the architect.

2. the enclosed cable lugs have to be properly crimped to the connector cable. then connect the cables following the colour coding / markings, for example, marking to plus (red). this order has to be maintained building and amplifierwise.

3. insert the speaker into the prepared recess. make sure that there is no strain between underlying insulation and panel (no compression). the speaker should be easily insertable into the opening.

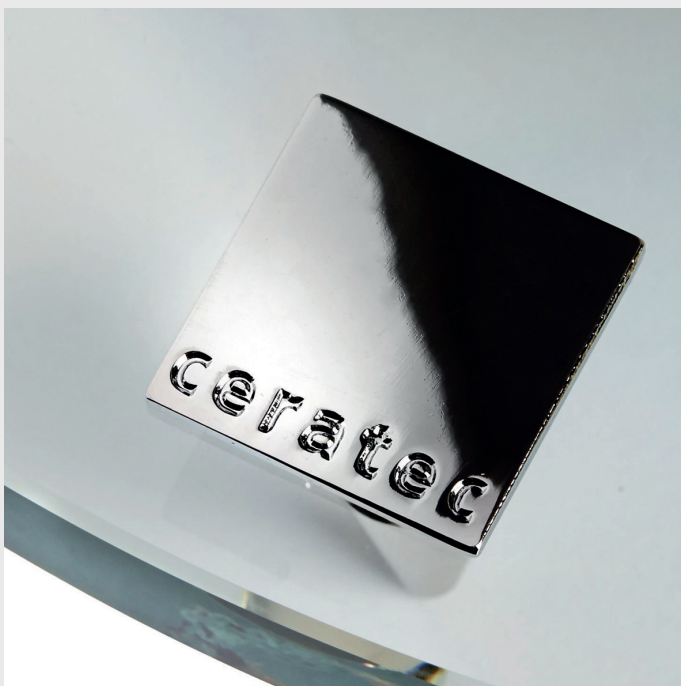
4. screw on the speaker according to the pre-drilled holes. the heads of the drywall screws should immerse about 1 mm into the diaphragm material. since the diaphragm has a lower density than the plasterboard panels, it's essential to tighten the screws very cautiously.

5. functional test: In addition to the basic function, any existing vibration noise can be made audible through the music signal, so that the substructure can be improved accordingly.

6. as it is obligatory with single-ply plasterboard constructions, the joints between plasterboard and speaker have to be always filled with a crack bridge. the same filling material that is used against cracks in other joints can be also applied here.

7. the sealing and spackling of joints and edges as well as screw heads is effected using a flexible fine filler as it is usually applied in drywall constructions (for example knauf uniflott and ardex 828).

8. cerasonar speaker panels are outfitted with a primer and have to be spackled all-over with the surrounding surface. thus, Q3 and Q4 wall / ceiling qualities are easily possible.



ceratec

ceraclassic architectural speakers

ceraclassic is the perfect alliance of functionality, beauty and quality. the sonority remains powerful, authentic throughout all volume levels with absolute precision. while the elaborate technology is always present, it conceals discreetly in the background.

ceraclassic lives up to highest demands of a genuine music reproduction and convinces with an aesthetic appearance, that substantially blends into the living environment.

colours

silver anodized – black fabric grille

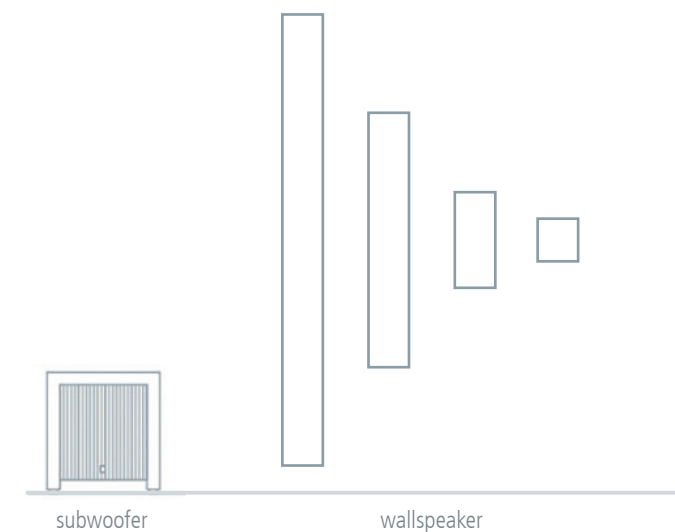
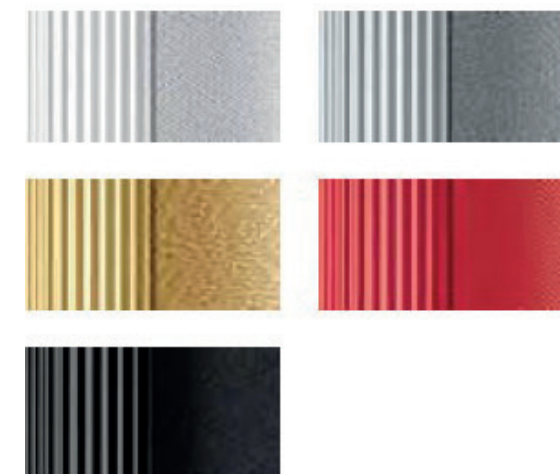
black anodized

white lacquer high-gloss

gold anodized

ral colours on request

colour matched fabric covers





ceraclassic wallspeaker architectural speakers

powerful, room-filling, unadulterated – **cera**classic merges an overwhelming sound spectrum into an exquisite design. for a listening pleasure that makes your living room even more beautiful.

ceraclassic stages voluminous and detailed sound worlds in a compact and elegant way. the spatial intensity of the music isn't only to be heard, but experienced physically at the same time.

the **effeqt** wall speaker is rotatable and can be mounted vertically as well as horizontally. the wall bracket is precisely adjustable and allows for an optimal alignment with the listening position.



effeqt maxi w effeqt w effeqt mini w effeqt micro w

	2.5 way bassreflex	2.5 way bassreflex	2 way	1 way
capacity:	100 - 150 w	100 - 150 w	50 - 100 w	25 - 50 w
impedance:	4 ohm	4 ohm	8 ohm	8 ohm
frequency range:	40 - 25,000 hz	60 - 25,000 hz	80 - 25,000 hz	100 - 20,000 hz
efficiency:	84 db 1 w/1 m	84 db 1 w/1 m	82 db 1 w/1 m	82 db 1 w/1 m
measurements:	120 cm tall	68 cm tall	26 cm tall	11 cm tall
column:	13 cm round	13 cm round	13 cm round	13 cm round
stand:	projection 3 cm	projection 3 cm	projection 3 cm	projection 3 cm

ceraclassic centerspeaker architectural speakers

ceraclassic brings the big cinema sound into the living room - breathtakingly realistic and with first-class speech intelligibility. a surround-scenery is created, the action of the movie gets real close.



effeqt centerspeaker

indispensable for the perfect sound of a home cinema system: the **effeqt** centerspeakers ensure best speech intelligibility. a homogeneous sonic image and an imposing acoustic spatiality are therefore assured.



effeqt cs
custom colour

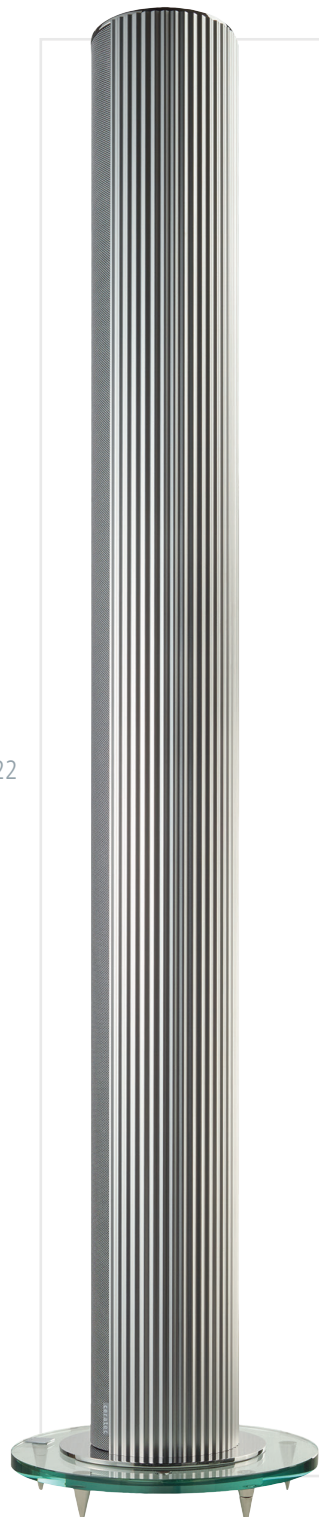


effeqt c



effeqt cs

	2.5 way bassreflex	2.5 way bassreflex
capacity:	100 - 150 w	100 - 150 w
impedance:	4 ohm	4 ohm
frequency range:	40 - 25,000 hz	60 - 25,000 hz
efficiency:	84 db 1 w/1 m	84 db 1 w/1 m
measurements:	119 cm wide	68 cm wide
column:	13 cm round	13 cm round
stand:	3 cm ground clearance	3 cm ground clearance



ceratec

ceraclassic floorspeaker architectural speakers

slender, but extremely powerful: with **ceraclassic** music can be experienced intensively like in a live concert - entirely relaxing at home.

a work of art for eyes and ears: the **effeqt** floorspeaker was developed for the brilliant stereo enjoyment, but also provides first-class sound characteristics in combination with a home theater system. the high-quality silk dome tweeter and the custom-built woofer offer full-range operation even without a subwoofer.

ceratec

effeqt t
2.5 way bassreflex

effeqt
2.5 way bassreflex

effeqt mini
2 way closed

capacity:	100 - 150 w	100 - 150 w	50 - 90 w
impedance:	4 ohm	4 ohm	4 ohm
frequency range:	40 - 25.,00 hz	40 - 25,000 hz	80 - 25,000 hz
efficiency:	84 db 1 w/1 m	84 db 1 w/1 m	82 dB 1 w/1 m
measurements:	166 cm tall	124 cm tall	26 cm tall
column:	13 cm round	13 cm round	13 cm round
stand:	26 cm round	26 cm round	16 cm round

ceraclassic subwoofer & soundbar architectural speakers

the impressive performance of ceraclassic discloses a music and movie enjoyment, that thrills - and that can be precisely adjusted to individual listening preferences. discover the ultimate sound experience, that will move your life.

music is rich in energy and expresses the attitude to life. **ceraclassic** renders every single tone in a fascinating depth and pureness. it's the pleasure of a profound sound, perfect in all its facets.



vita
custom colour

subwoofer

a low-frequent gain in sound quality for the ultimate movie experience: as exceptionally powerful subwoofer, the **vita** ideally complements the front, rear and centerspeakers. their full quality potential unfolds even in pure stereo applications.

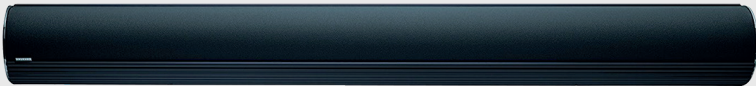


vita

	subwoofer active
principle:	downfire / bassreflex
amplifier:	500 watt
woofer:	22 cm
frequency range:	18 - 300 hz
height:	44 cm
width:	40 cm
depth:	40 cm

effeqt soundbar

indispensable for the perfect sound of a home cinema system: the **effeqt** soundbar ensures best speech intelligibility. a homogeneous sonic image and an imposing acoustic spatiality are therefore assured. the effeqt soundbar is available as three-channel or two-channel version.



effeqt tw 3.0 LCR

	2 way bassreflex
capacity:	3 x 50 - 100 w
impedance:	8 ohm
frequency range:	80 - 25,000 hz
efficiency:	82 db 1 w/1 m
measurements:	161 cm wide
column:	13 cm round
stand:	projection 3 cm

effeqt tw 2.0 stereo

	2.5 way bassreflex
capacity:	2x 100 - 150 w
impedance:	4 ohm
frequency range:	60 - 25,000 hz
efficiency:	84 db 1 w/1 m
measurements:	161 cm wide
column:	13 cm round
stand:	projection 3 cm

ceraclassic

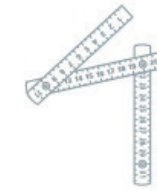
custom solutions

ceraclassic also allows for custom sizes, colours and variants. each of our products is manifold changeable and flexibly adaptable to personal requirements. we realize personal speakers on the basis of our existing product lines. this will take a long time?

don't worry! as our products are manufactured exclusively in germany, made-to-order solutions do not take very long.



effekt mini
custom colour/
custom glass stand



custom sizes

the cabinet is infinitely adaptable to your requirements - with a freely selectable length between 110 and 1,600 mm.



custom colours

top and bottom cover, cabinet, front grille, glass base plate and brackets in every desired ral or pantone colour shade - high gloss or matte, lacquered or anodized.



custom design

upon request we also individually customize the driver configuration of the speakers: mono (1.0), stereo (2.0), lcr (3.0) or 100 volt technology.

ceraICE

immersive cinema experience loudspeakers

an experience created to indulge all senses: with the **ceraICE** series speaker systems, home cinema becomes a cinematic masterpiece. the high-quality speakers reproduce an authentic, clear sound that lets every movie touch reality. the design allows for efficient installation and placement without neglecting the singularity of individual spaces.

the perfect home cinema should not be determined by the looks of the speaker system. **ceraICE** not only ensures safe installation, but also enables the hidden placement of high-quality speakers.



ceralCE

sound as clear as ICE

the **ceralCE** cinema loudspeakers are ideally suited for dedicated home cinema spaces. the LCR models intended for on-wall installation are positioned behind the sound-permeable fabric screen. the black cabinets with a special matt coating and the removable black fabric grille don't reflect the projector's light back through the fabric. with a total depth of around 19 cm, the loudspeaker cabinets occupy only little space behind the screen and can be connected to a safety rope by means of a steel eyelet. these speakers are also suitable for overhead mounting required by 3D surround formats.



ceralCE S8.2

capacity:	300 /600 watt
impedance:	4 ohm
frequency range:	70 - 20,000 hz
max. SPL:	116 db continues, 122 db peak
woofer:	2x 20 cm konus
tweeter:	26 mm horn
measurements:	650 x 460 x 190 mm

	LCR	SUR	3D
25qm:	*****	*****	*****
50qm:	*****	*****	*****
100qm:	*****	*****	*****

powerful LCR loudspeaker, also applicable as SUR speaker. the special black-matt coating avoids interfering reflections. therefore also ideal for the mounting behind sound-permeable fabric screens.



ceralCE S8.1

capacity:	150 /300 watt
impedance:	8 ohm
frequency range:	70 - 20,000 hz
max. SPL:	109 db continues, 115 db peak
woofer:	1x 20 cm konus
tweeter:	26 mm horn
measurements:	440 x 460 x 190 mm

	LCR	SUR	3D
25qm:	*****	*****	*****
50qm:	*****	*****	*****
100qm:	*****	*****	*****

powerful two-way loudspeaker, also ideally applicable as SUR or 3D-audio speaker. the special black-matt coating avoids interfering reflections. therefore also ideal for the mounting behind sound-permeable fabric screens.



ceralCE S6.2

capacity:	120 /240 watt
impedance:	4 ohm
frequency range:	70 - 20,000 hz
max. SPL:	114 db continues, 120 db peak
woofer:	2x16.5 cm konus
tweeter:	30 mm kalotte
measurements:	600 x 400 x 165 mm

	LCR	SUR	3D
25qm:	*****	*****	*****
50qm:	*****	*****	*****
100qm:	*****	*****	*****

powerful LCR loudspeaker, also applicable as SUR speaker. the special black-matt coating avoids interfering reflections. therefore also ideal for the mounting behind sound-permeable fabric screens.



ceralCE S6.1

capacity:	60 /120 watt
impedance:	8 ohm
frequency range:	70 - 20,000 hz
max. SPL:	110db continues, 116 db peak
woofer:	1x 16.5 cm konus
tweeter:	30 mm kalotte
measurements:	400 x 400 x 145 mm

	LCR	SUR	3D
25qm:	*****	*****	*****
50qm:	*****	*****	*****
100qm:	*****	*****	*****

powerful two-way loudspeaker, also ideally applicable as SUR or 3D-audio speaker. the special black-matt coating avoids interfering reflections. therefore also ideal for the mounting behind sound-permeable fabric screens.

ceralCE subwoofer

the three subwoofer models impress with their thin construction depth and are also designed for direct placement to the walls of the cinema space. clip terminals on the front and additional speakON connectors on the back allow for different cable routings.



ceralCE 15.2

ceralCE 12.2

ceralCE 12.1

capacity:	1400 /2400 watt	350 /700 watt	350 /700 watt
impedance:	4 ohm	8 ohm	8 ohm
frequency range:	28 - 200 hz	28 - 200 hz	36 - 200 hz
max. SPL:	128 db continues, 134 db peak	115 db continues, 121 db peak	115 db continues, 121 db peak
woofer:	2x 38.5 cm konus	2x 30.5 cm konus (1x passiv)	1x 30.5 cm konus
tweeter:	-	-	-
measurements:	1000 x 1000 x 300 mm	1100 x 550 x 230 mm	800 x 550 x 230 mm

SUB

SUB

SUB

25qm:	*****	*****	*****
50qm:	*****	*****	*****
100qm:	*****	*****	*****

high-performance subwoofer. despite its size, it is suitable for installation in the stage area. flush with the screen's surface behind that the LCR speakers are installed. front and rear connection terminals for optimized cable routing.

high-performance subwoofer with passive membrane. its reduced cabinet depth allows for the installation in the stage area. flush with the screen's surface behind that the LCR speakers are installed. front and rear connection terminals for optimized cable routing.

high-performance subwoofer for smaller spaces. its reduced cabinet depth allows for the installation in stage areas. flush with the screen's surface behind that the LCR speakers are installed. front and rear connection terminals for optimized cable routing.

ceraART

concrete outdoor loudspeakers

quality in the sound is as important to us as the aesthetic integration of the speaker systems in your environment. for this reason, **ceraART** offers solutions for harmoniously linking appearance and technology together. all products in this series are reduced to their essentials: a first-class sound in an elegant concrete enclosure.

elegant sounds, aesthetic furnishings - a form of lifestyle that can only be equaled. elaborately sophisticated designs allow the seamless integration of speakers into your living experience. the products of the **ceraART** series not only look like design furniture, they also offer the finest sound experience.



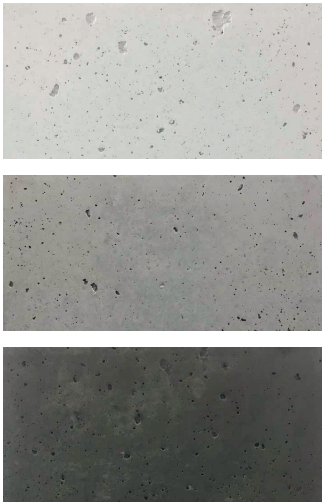
ceraART

design and technology in symphony

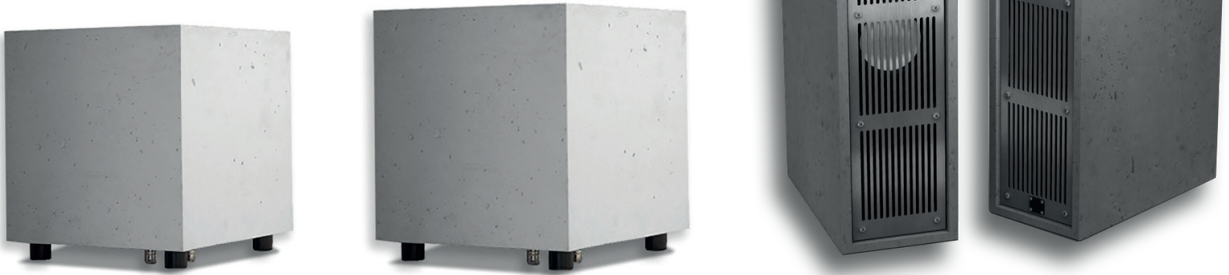
passive subwoofer in a plain cubic design. the concrete enclosure is available in white / grey / dark grey. useable both for outdoor areas and modern interiors.

connection

the cover grille made of stainless steel offers protection against damage and prevents the invasion of rodents.



colours:
** these unique pieces include colour variations and air inclusions for the lively appearance of concrete.



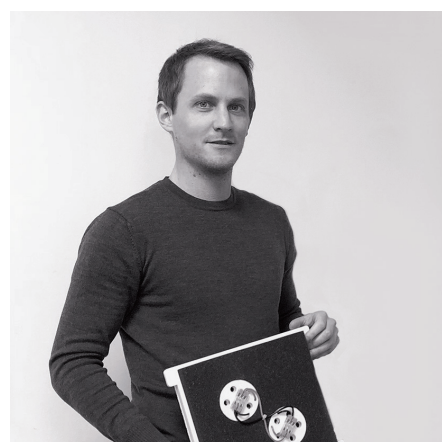
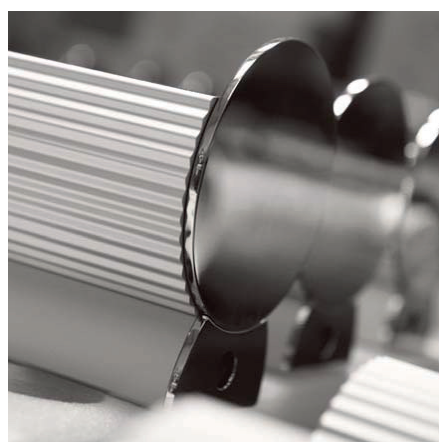
	ceraART concrete 1	ceraART concrete 2	ceraART concrete 3/ concrete 4***
capacity:	200 - 400 watt (RMS / peak)*	200 - 400 watt (RMS / peak)*	160/ 500 watt (RMS / peak)
impedance:	4 ohm	4 ohm	4/6 ohm
drift:	22 cm aluminiumkonus	30 cm aluminiumkonus	2x 15 cm aluminiumkonus / 1x 27 mm aluminiumkalotte
frequency range:	25 - 150 hz	20 - 150 hz	35 - 25,000 hz
radiation range:	360° downfire	360° downfire	direct
efficiency:	84 db 1 w/1 m	86 db 1 w/1 m	87 db 1 w/1 m
measurements:	36.5 x 39.8 x 36.5 cm (bht)	39 x 41.5 x 39 cm (bht)	19.5 x 78 x 39 cm (bht)
construction:	concrete enclosure**/stainless steel/ IP34	concrete enclosure**/stainless steel/ IP34	concrete enclosure**/stainless steel/ IP34
application:	inndoor / outdoor	inndoor / outdoor	inndoor / outdoor
weight:	30 kg	35 kg	30 kg

application

- *external subwoofer amplifier required
- ** these unique pieces include colour variations and air inclusions for the lively appearance of concrete
- *** horizontal d'apolito centerspeaker

passive subwoofer in a plain cubic design. useable both for outdoor areas and interior spaces. on the underside the cover grille made of stainless steel offers protection. connection terminal with speakON connector on the backside.

passive high-end two-way outdoor loudspeaker. useable both for outdoor areas and modern interiors. connection terminal with speakON connector on the rearside



ceratec

ceratec

handmade in germany

speaker systems that meet our uncompromising quality standards, can only be manufactured in elaborate handwork. sound engineers, musicians, physicists – they all are involved in the development of our products. what they all have in common is the passion for perfect sound characteristics. at cerasonar we measure, analyze and meticulously work until each member of the team is thrilled.

the same applies to the appearance of our products, which distinguishes itself by the exclusive use of high-quality materials such as aluminum, chrome and crystal glass: our design is rooted in the imperishable tradition of the functional design principles already established decades ago by the Bremen product designer wilhelm wagenfeld.

ceratec audio design gmbh
walter-bertelsmann-weg 2
27726 worpswede / germany
phone: +49 (0) 4792 9557080
email: info@ceratecaudio.de



technical changes and colour deviations
caused by printing technology are reserved.
illustrations included can show products with
optional extras.



ceratec audio design gmbh
walter-bertelsmann-weg 2
27726 worpswede / germany

phone: +49 (0) 4792 9557080
email: info@ceratecaudio.de
www.ceratecaudio.de

concept & design: lea kratzert